

Category 6A 6C Outlet



Category 6A 6C outlet, black (SGKSsu6-45bk)

This Category 6A outlet is perfect for use with "6C" 25 x 38 faceplates and POD/GOP boxes.

Features

- High performance compliant with TIA/EIA 568-B.2-10 at component level
- Quick and easy tool-free lever termination
- Fully shielded die-cast socket body is robust as well as offering outstanding performance in eliminating alien cross-talk
- Compliant with IEC60512-99-001 – suitable for use with IEEE 802.3at (PoE+) applications
- Angled presentation minimizes issues with bend radius
- Window and paper labelling feature

Specifications

- Weight: 30 grams approx.
- Dimensions: 34 x 25 x 43 mm approx.
- Colour: Silver and black (faceplate adaptor also available in white)
- Materials:
 - Socket housing: Zinc alloy
 - RJ45 contacts: 50µ"/1.27µm gold plating over nickel over phosphor bronze
 - Faceplate adaptor: ABS UL94-V0
- Supplied with hinged shutter, to reduce dust ingress, and a cable tie.
- Supplied as a kit.
- Packaging: In individual poly bag with instructions then bagged in 20's
- EAN number: 5055386506597

Category 6A “Euro” Outlet



Category 6A “Euro” Outlet, white (SGKSsu-45wh)

This Category 6A outlet is designed for use with industry standard “Euro” faceplates with 25 x 50 mm openings.

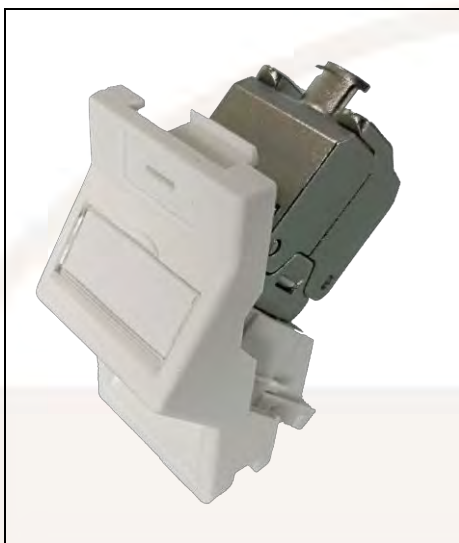
Features

- High performance compliant with TIA/EIA 568-B.2-10 at component level
- Quick and easy tool-free lever termination
- Fully shielded die-cast socket body is robust as well as offering outstanding performance in eliminating alien cross-talk
- Compliant with IEC60512-99-001 – suitable for use with IEEE 802.3at (PoE+) applications
- Angled presentation minimizes issues with bend radius
- Supplied with a shuttered front aperture to reduce dust ingress
- Window and paper labelling feature

Specifications

- Weight: 32 grams
- Colour: White and silver (faceplate adaptor also available in black, to order)
- Dimensions: 54 x 40 x 25 mm
- Materials:
 - Socket housing: Zinc alloy
 - RJ45 contacts: 50µm/1.27 µm gold plating over nickel over phosphor bronze
 - Faceplate adaptor: ABS UL94-V0
- Supplied with cable tie and supplied as a kit
- Packaging: In individual poly bag with instructions, then bagged in 20's
- EAN number: 5055386506580

Category 6A “Euro” Outlet



Category 6A “Euro” Outlet, white (SGKSj45wh)

This Category 6A outlet is designed for use with industry standard “Euro” faceplates with 25 x 50 mm openings.

Features

- High performance compliant with TIA/EIA 568-B.2-10 at component level
- Quick and easy tool-free lever termination
- Fully shielded die-cast socket body is robust as well as offering outstanding performance in eliminating alien cross-talk
- Compliant with IEC60512-99-001 – suitable for use with IEEE 802.3at (PoE+) applications
- Ease of installation
 - Quick and easy tool-less lever “butterfly” style termination
 - Core carrier easily placed in the correct orientation and retained
 - Insulator design around the IDC contacts prevents potential shorting against the casing.
- Angled presentation minimizes issues with bend radius
- Supplied with a shuttered front aperture to reduce dust ingress
- Window and paper labelling feature

Specifications

- Weight: 28 grams
- Colour: White (RAL 9003)
- Dimensions: 55 x 50 x 25 mm
- Materials: Socket housing: Zinc alloy, RJ45 contacts: 50µm/1.27 µm gold plating over nickel over phosphor bronze, Faceplate adaptor: ABS UL94-V0
- Supplied with cable tie and supplied as a kit
- Packaging: In individual poly bag with instructions, then bagged in 20's

EAN: 5055386506580

Commodity code: SGKSj45wh: 85444920

Country of origin: China