

## Fibre Keystone Coupler



### **Fibre Keystone Coupler (KOCMM, KOCSM, KOLMM, KOLSM, KOTMM and KOTSM)**

Our new range of fibre couplers extends our selection of multimedia adapters. These female-to-female keystone couplers with their standardised dimensions can be used for easy snap-in mounting in a keystone patch panel, faceplate or surface-mount box. Their range now consists of couplers for the six of the most popular fibre connectors (SC, ST and LC) in both black and white. The compact design allows fitting 24 keystone couplers in a 1U keystone patch panel.

#### **Features**

- Fibre female to female keystone couplers as follows:
  - SC to SC multi-mode simplex
  - SC to SC single mode simplex
  - LC to LC multi-mode duplex
  - LC to LC single-mode duplex
  - ST to ST multi-mode simplex
  - ST to ST single-mode simplex
- Designed to fit industry standard keystone outlets and patch panels
- Black and white versions available to match panel or faceplate colour
- Also available in our [Panel Mount](#), [Low Profile Panel Mount](#), [D UNIVERSAL](#) and [DIN Rail ranges](#)





### Specifications

- Connections: female to female
- Keystone housing: ABS UL94V-0
- Ceramic (ZrO<sub>2</sub>) sleeves

**Commodity Code:** 85369010

**Country of Origin:** China

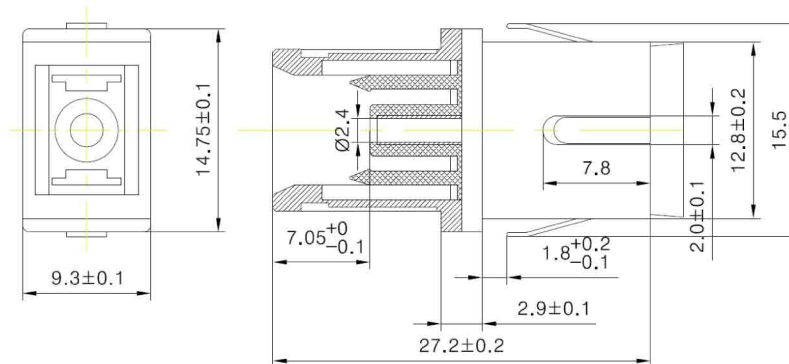
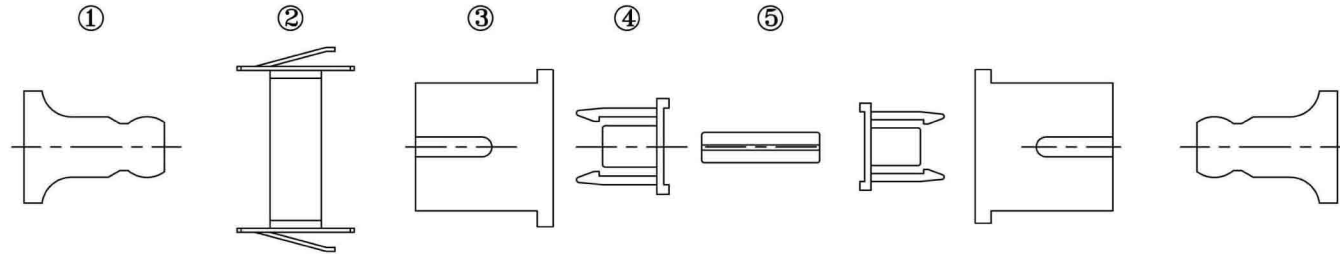
Keystone	Type	Dimensions	Colour	EAN
KOCMM	SC to SC multi mode simplex	28x21x17mm	Beige	5055386503169
KOCSM	SC to SC single mode simplex	28x21x17mm	Blue	5055386503091
KOLMM	LC to LC multi mode duplex	27.5x21x17mm	Beige	5055386500663
KOLSM	LC to LC single mode duplex	27.5x21x17mm	Blue	5055386508683
KOTMM	ST to ST multi mode simplex	30x21x15mm	Silver - black dustcover	5055386503107
KOTSM	ST to ST single mode simplex	30x21x15mm	Silver - yellow dustcover	5055386505781

			
Panel Mount	Low Profile Panel Mount	D UNIVERSAL	DIN Rail

Available Mounts

ROHS Compliant

Code:KOCMM, KOCSM



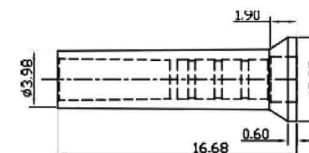
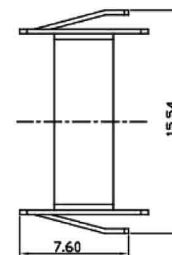
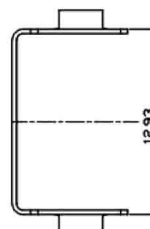
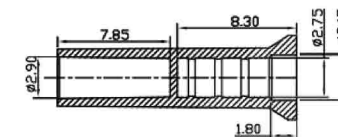
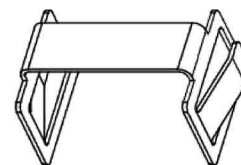
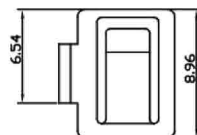
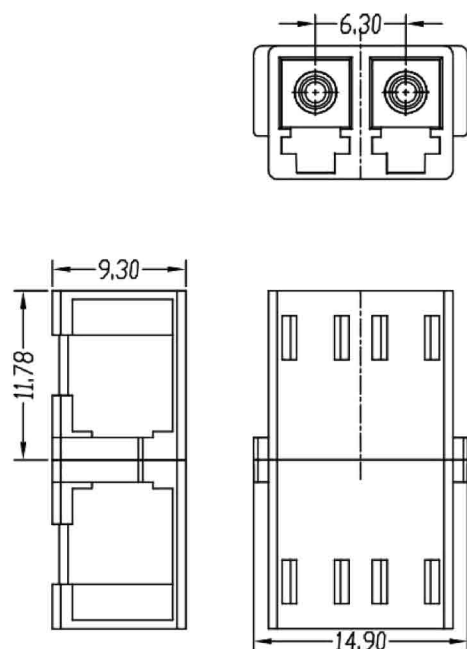
#### Connector Specifications:

- a. Colour: KOCMM beige, KOCSM blue
  - b. Alignment Sleeve: Zr02
  - c. Insertion Loss: 0.20dB MAX
  - d. Durability (500 MATINGS): 0.15dB MAX INCREASE
  - e. Retention force: 200~600 Grams
  - f. Operating Temperature: -40°C~+80° C
- Keystone Adaptor Material: ABS UL94V-0,  
available in white or black

5	Sleeve	Zr02	1	▽:Critical Dim
4	SC Hook	PBT(GF 15%)	2	⊙:Major CAV
3	SC Adaptor Body Simplex	PBT(GF 30%)	2	Tolerances
2	Clip	Stainless	1	0. ±0.50
1	SC Adaptor Cap	ABS	2	0.0 ±0.20
N0	Descriptions	Material	Q'ty	Angle ±2°

ROHS Compliant

**Code: KOLMMDX  
KOLSMDX**



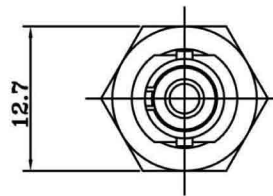
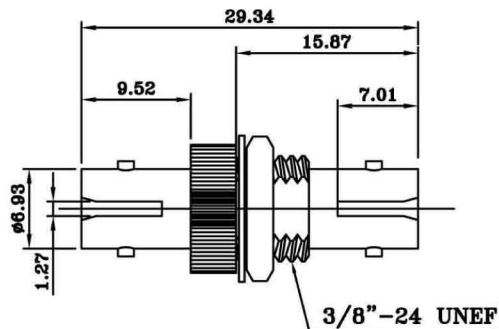
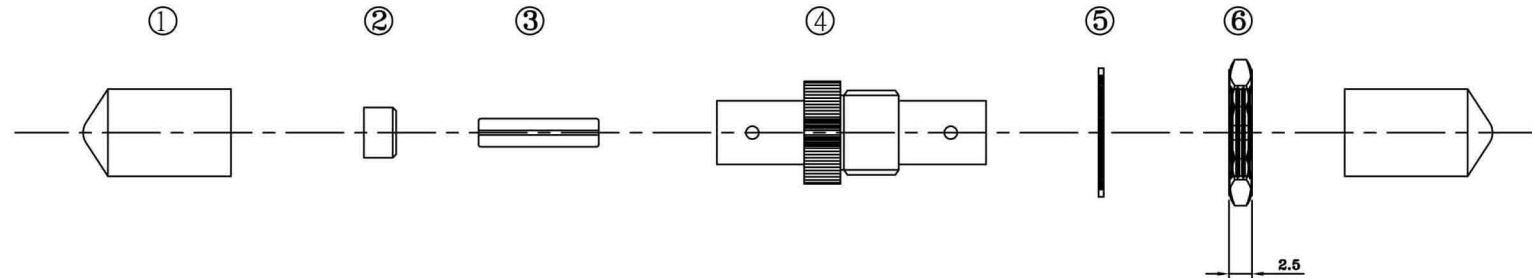
4	Staple Spring	Stainless Steel	1
3	Sleeve	ZrO2	2
2	Adaptor Housing	Polyetherimide (PEI)	2
1	Dust Cap	PP	2
No.	Description	Material	O'ty

Specifications:

1. Colour: KOLMMDX beige, KOLSMDX blue
  2. Alignment Sleeve: Zr02
  - 3.Insertion Loss: 0.20dB MAX
  - 4.Durability (500 MATINGS): 0.15dB MAX INCREASE
  - 5.Retention force: 100~250 Grams
  - 6.Operating Temperature: -40°C~+80° C
- Keystone Adaptor Material: ABS UL94V-0,  
available in white or black

ROHS Compliant

**Code: KOTMM, KOTSM**



**Connector specifications:**

- a. Colour: KOTMM black dust cover, KOTSM yellow dust cover
  - b. Alignment Sleeve: Zr02
  - c. Insertion Loss: 0.20dB MAX
  - d. Durability (500 MATINGS): 0.15dB MAX INCREASE
  - e. Retention Force: 200~600 Grams
  - f. Operating Temperature: -40°C~+80° C
  - g. Material: Zn-Alloy
- Keystone Adaptor Material: ABS UL94V-0, available in white or black



6	3/8"-24 UNEF	Cu-Ni	1	<b>▽ : Critical Dim</b> <b>● : Major CAV</b> Tolerances 0. ±0.50 0.0 ±0.20 Angle ±2°
5	Washer	Steel-Ni	1	
4	ST Adaptor Body Simplex	Zn-Alloy	1	
3	Sleeve	Zr02	1	
2	Bush	Cu-Ni	1	
1	ST Adaptor Cap	PVC	2	
NO	Descriptions	Material	Q'ty	