

CONNECT5+ 8 pair consolidation module



CONNECT5+ 8 pair consolidation module(F23)

The CONNECT5+ is an 8 pair disconnection module suitable for use as part of a Category 5e consolidation point, using LSA+ type mounting frames or 95mm Profil-type rods. Each module can join 2 standard cables.

Features

- Fully compliant with Category 5e performance requirements for a consolidation point
- Fully compatible with industry standard back mount frames, 19" subracks, label holders, connection boxes and insertion tools
- Tried and tested industry standard LSA+ type contacts
- Suitable for use with POE+
- Disconnection facility allows lines to be disconnected temporarily for testing
- Silver-plated contacts maintain electrical performance even after re-termination

Specifications

- Net weight: 46g approx
- Dimensions: 122mm x 18mm x 43mm (in primary packing)
- Colour: white housing with grey base

Materials

- Housing: PBT (Flame retardancy satisfies UL94V-0)
- Contacts: Silver-plated Phosphor Bronze
- Copper conductor diameter: 0.40 to 0.65mm
- Insulation resistance: $\geq 1\text{G}\Omega$
- Contact resistance (in connection points): $\leq 10\text{m}\Omega$

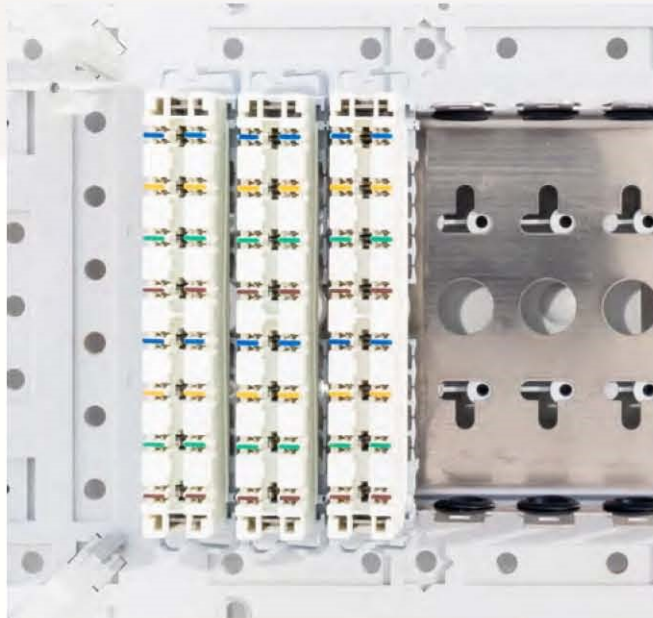
Packaging: Supplied in polythene bag of 5 then in carton of 10 then in outer carton of 100

Commodity code: 85369090

County of origin: China

EAN Number: F23 - 5055386509307

Illustrative images:



Example of installation in connection box



Example of sub-rack mounting