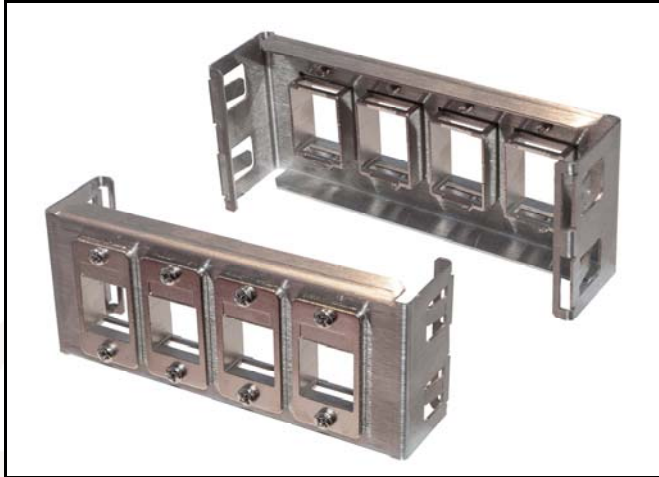


## 4-way keystone frame for use on LSA+ mounting frames



**MF4PM**



**SGKSMFPM**

### 4 way keystone frame for use on LSA+ mounting frames (MF4PM, SGKSMFPM)

*This new keystone frame acts as a 'panel' that allows 4 keystones to be used on LSA+ type mounting frames. Available both as an empty keystone "panel" (MF4PM) and kitted as a "panel" with 4 Cat 6A sockets (SGKSMFPM). The empty "panel" offers the flexibility to accommodate almost all our wide range of keystones.*

#### **Features:**

##### **MF4PM:**

- Designed to extend life of voice installations where data or multimedia connections are needed
- Manufactured from high quality brushed stainless steel and fitted with nickel plated zinc alloy keystone adaptors
- Suitable for four keystones up to 22mm wide

##### **SGKSMFPM**

- MF2PM supplied with 4 high performance permanent link compliant Cat 6A keystone sockets (TUK code: SGKSje)

**Specifications:**

- Weight:  
MF4PM: 61.8g approx.  
SGKSMFPM: 213.8g approx.
- Dimensions:  
MF4PM: 107 x 43 x 25mm approx.  
SGKSMFPM: 107 x 43 x 34mm approx.
- Colour: Silver
- Materials:  
Frame: speed sanded 1mm stainless steel  
Panel mount adaptor: Nickel plated zinc alloy

**Commodity code:** 85369010

**EAN:** MF4PM: 5055386510167

SGKSPM: 5055386510174

**Country of Origin:** United Kingdom



**Illustrative shots of MF4PM in use**