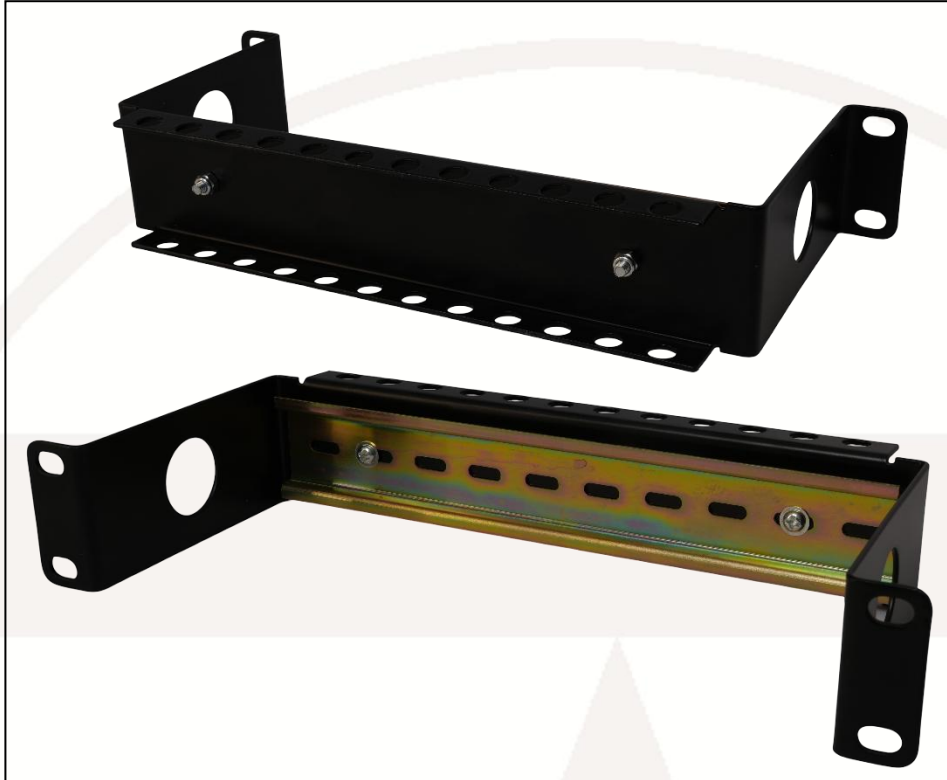


### **miniMEDIA 10" Rack Mount Din Rail Panel**



### **miniMEDIA 10" Recessed Rack Mount Din Rail Panel (FFDIN/10)**

This rack mount 1U panel is recessed and designed for mounting DIN rail connectors. The TS35 rail is recessed by 90mm and the frame is equipped with cable tie and access features to accommodate most equipment and connectors.

#### ***Features***

- 1U panel fitted with TS35 DIN rail
- 90mm recess with cable access points at both sides
- Supplied with convenient rear cable tie facilities
- Provided with M6 mounting kit of 4 caged nuts, bolts and washers
- Zinc coated steel unpainted Din rail ensures optimal earthing

#### ***Specifications***

- Weight: 412g (including primary packaging)
- Dimensions: 270x120x55mm (in primary packaging)
- Colour: black
- Frame: Carbon steel
- DIN rail: Chromated zinc plated mild steel

**Packaging:** Packed in a white card box then in cartons of 24

**EAN:** 5055386513700

**Commodity Code:** 85444920

**Country of Origin:** China

**NB Not suitable for use with MB1U/10 10" wall/desk mountable bracket**

ROHS Compliant

**Code: FFDIN/10**

