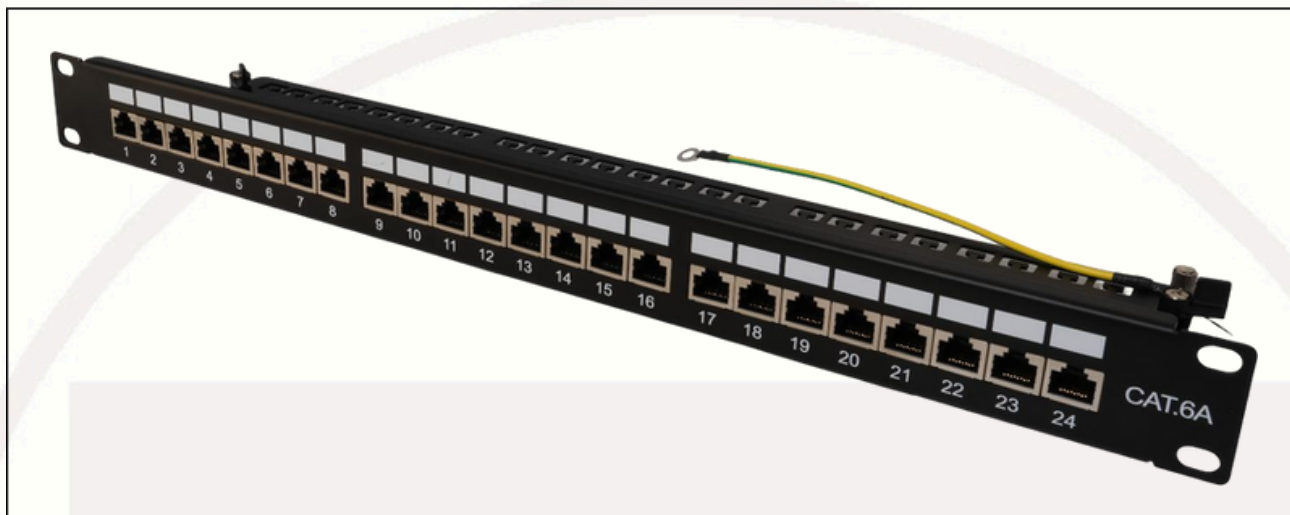


24 port Contractor Grade Category 6A patch panel



24 port Category 6A patch panel (SGF24kd)

19" Category 6A contractor grade 24 port permanent link patch panel, FTP, with horizontal rear cable management tray and LSA+ type IDC

Features

- Performs to Category 6A permanent link level
- Horizontal cable management at rear
- Suitable for POE+ installations
- Latched cover plate for easy access to IDCs
- PCB based, offers increased speed of termination
- Fitted with individual colour coded labels and port numbering for easy T568B wiring at rear of panel
- Accommodates LSA+ type termination tools
- Supplied with cage nut kit and cable ties
- Printed numbered ports and labeling facility

Specifications

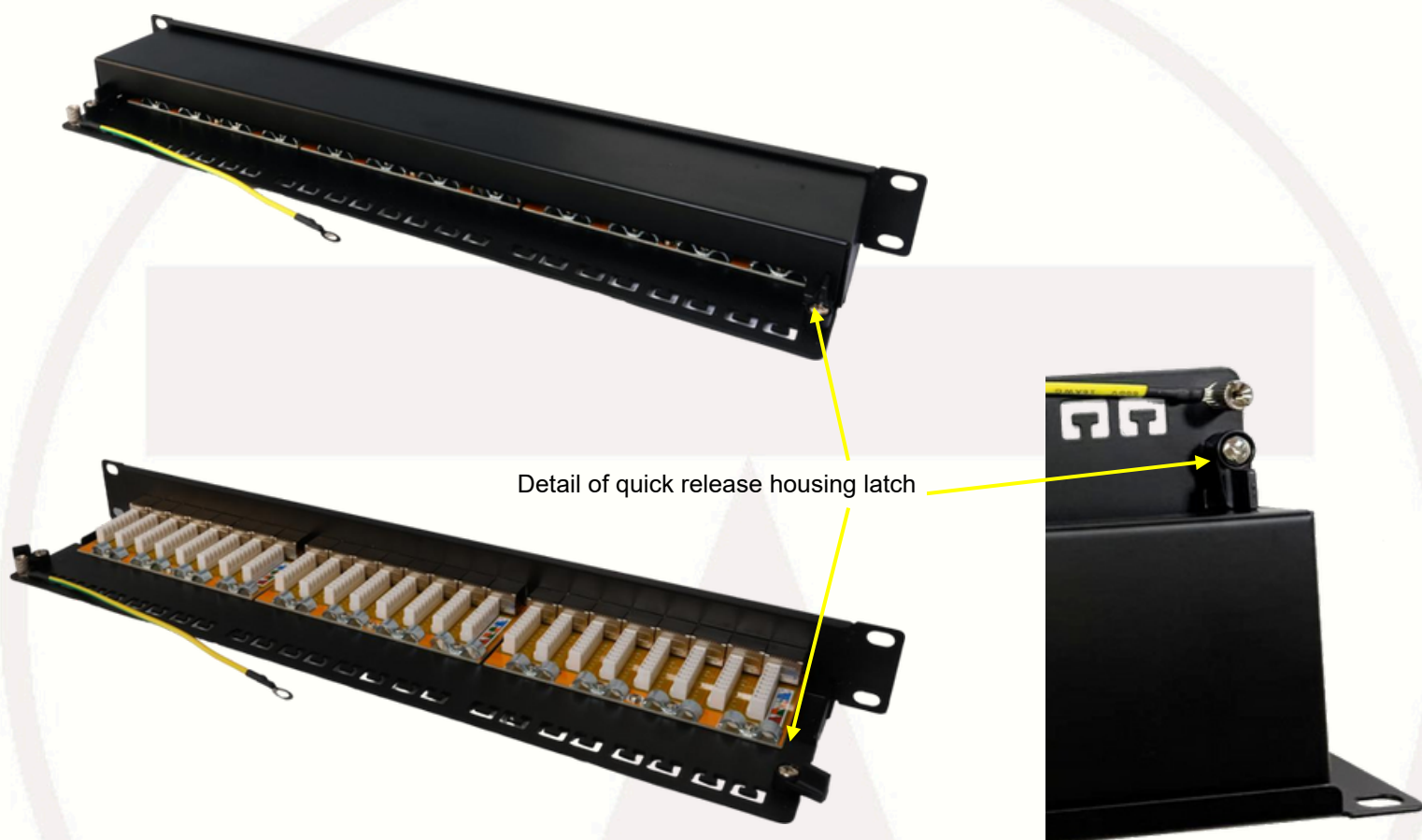
- Weight: 1668g (including primary packaging)
- Dimensions: 510x130x55mm (in primary packaging)
- Colour: black Frame: Liquid coated cold rolled steel
- Contacts: Socket: Gold over nickel over phosphor bronze
IDC: Tin plated over phosphor-bronze
- Durability RJ45 – 250 insertion cycles
IDC – 100 insertion cycles
- Operating temperature 0° to 70° C

Packaging: Packed in an individual polybag then in a white card box then in cartons of 10

EAN: 5055386513632

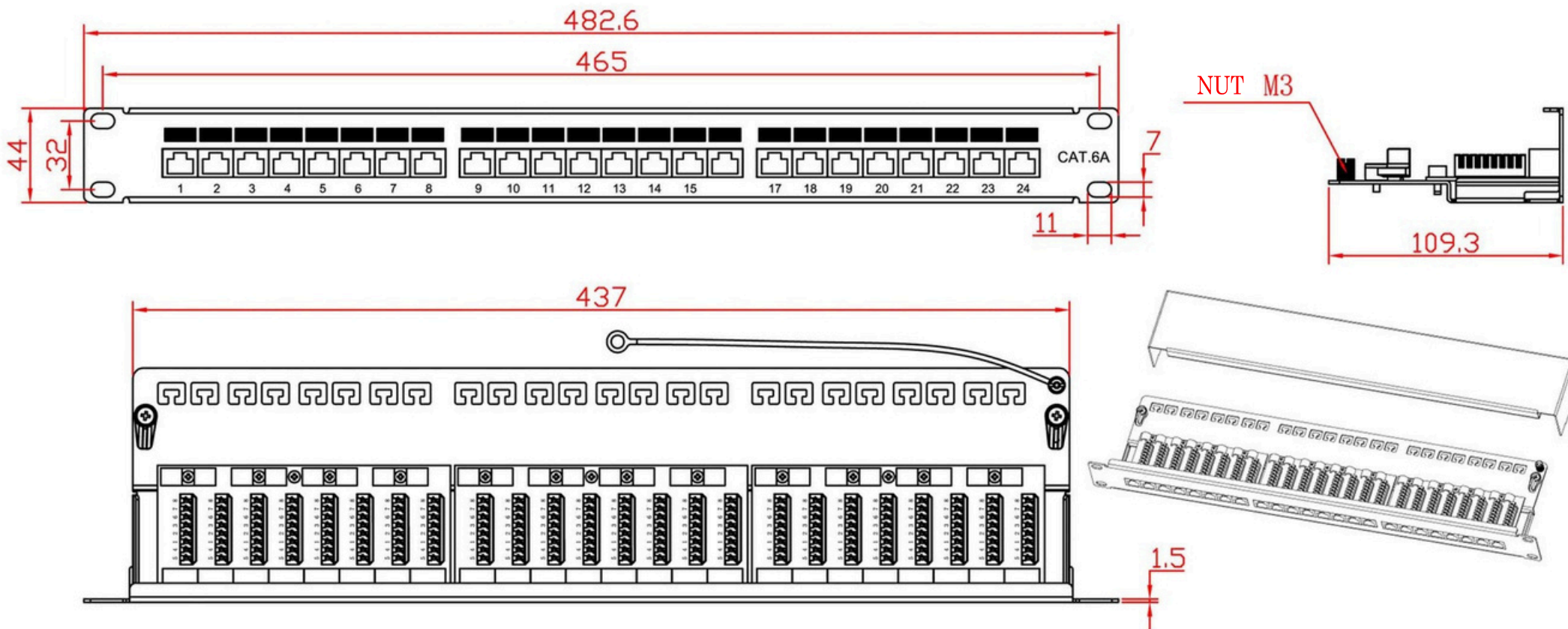
Commodity Code: 85444920

Country of Origin: China



ROHS Compliant

Code: SGF24kd



ELECTRICAL:

1. VOLTAGE RATING: 125 VAC RMS
2. CURRENT RATING: 1.5 AMP
3. CONTACT RESISTANCE: 100 MILLIOHMS MAX
4. INSULATION RESISTANCE: 1000 MEGOHMS MIN @ 500 VDC
5. DIELECTRIC STRENGTH: 750 VAC RMS 60Hz, 1MIN

ENVIRONMENTAL:

1. STORAGE: -40° TO +85°
2. OPERATION: 0° TO 70°

MECHANICAL:

1. HOUSING MATERIAL: ABS;
2. PANEL FRAME: LIQUID COATED COLD ROLLED STEEL IN BLACK 1.5mm
3. PCB MATERIAL: FR-4 T=1.6mm ;
4. IDC MATERIAL: PC , CONTACT: PLATING OF TIN; WITH NICKEL PATING ;
5. RJ45 JACK LIFE: 250 TIMES MIN;
6. IDC LIFE: 100 TIMES MIN;
7. WIRE: AWG 22-26;